

THE ORGANIZER

©600WPMPO

Many thanks to our super-heroes: kenjio, cYo, cbanack, Stonepaw, perezmu, docdoom & T3KN0Gh057

A



B



C



There is no absolute way to organize!

The method described in these pages is my way of doing things. This neither means that this is the only way, nor that all other ways are wrong ways. So, why even bother reading this? Because this will help you understand the process better, and encourage you to choose your own way.

Clear your basic concepts first

I strongly recommend first reading the ComicRack Manual (6th edition) to understand the basics of metadata, smart lists and scripts.

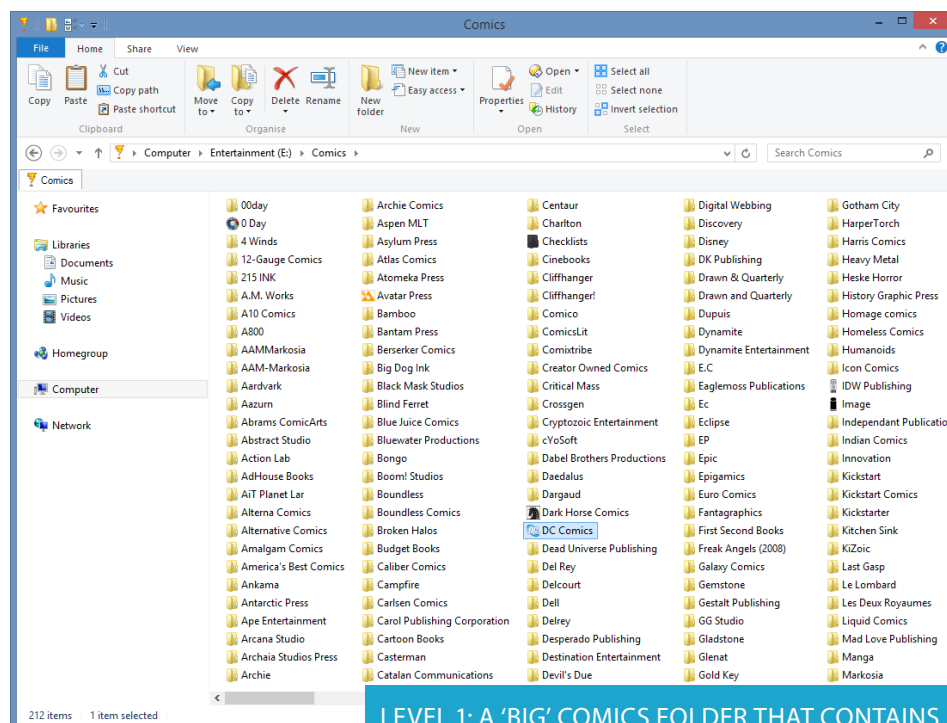
Install the 'big three' scripts next

Install the essential scripts for our needs: **ComicVine scraper**, **Data manager** and **Library Organizer**.

Another good (but optional) step is the **Duplicates Manager** script.

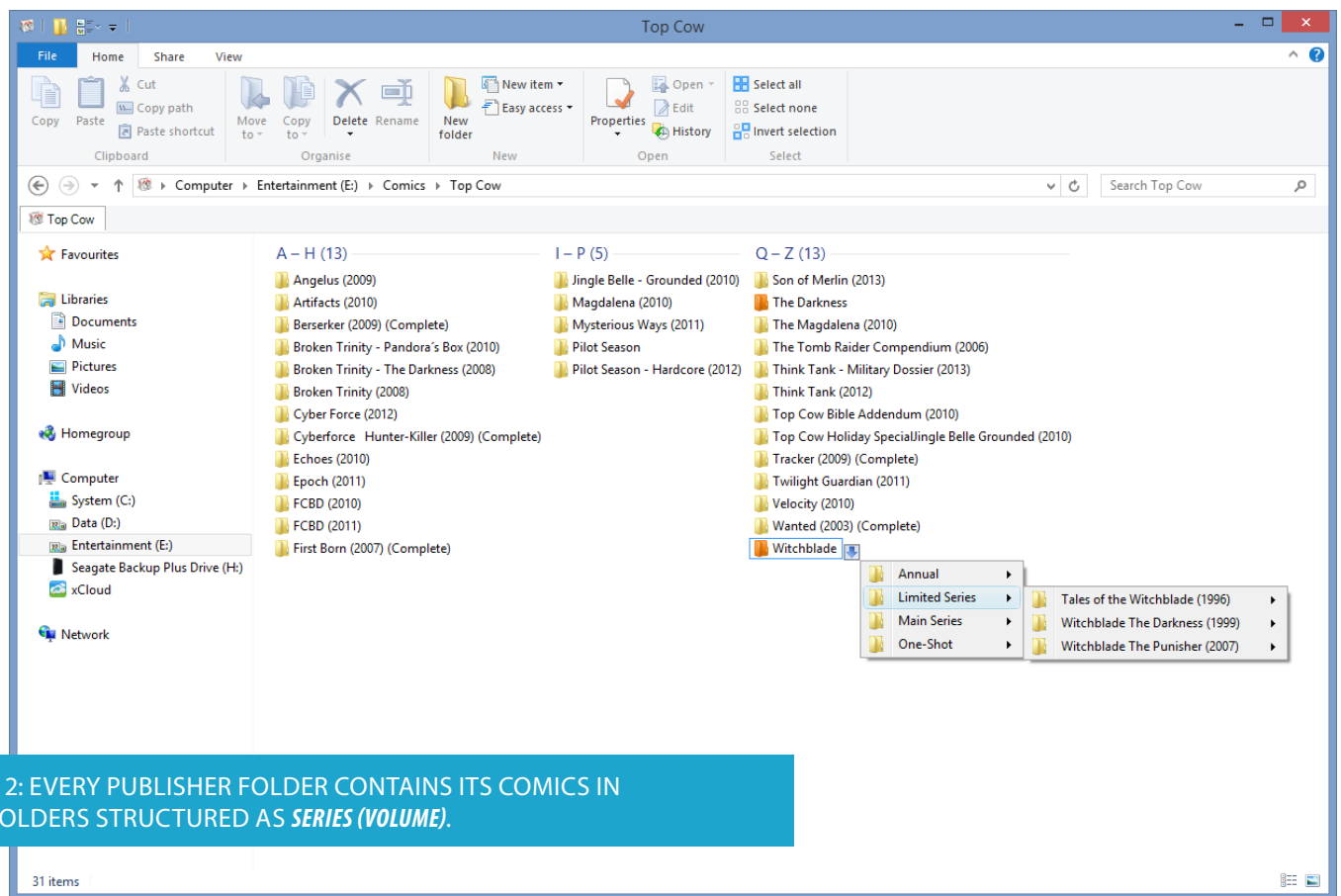
This handbook will help you organize your comic books inside a well-defined Windows Explorer folder structure. But, all the organization will be done from **WITHIN ComicRack**.

So, what folder structure are we looking at?



LEVEL 1: A 'BIG' COMICS FOLDER THAT CONTAINS FOLDERS FOR INDIVIDUAL PUBLISHERS

New users want to organize things first and then add them to the library, while actually it is the other way around. You are supposed to put all your books (no matter how unorganized they are) in one folder (e.g. The 0-day folder in the above picture) and then add it to the library. Tell ComicRack to check the folder for changes, and scan it on every startup. Now, make a smart list for all the unorganized books, and then work your way up to organize them VIA ComicRack.



LEVEL 2: EVERY PUBLISHER FOLDER CONTAINS ITS COMICS IN SUB-FOLDERS STRUCTURED AS **SERIES (VOLUME)**.

Inside a publisher folder, we have folders for individual series, with the volumes in brackets. Please note that we use the starting year of a series as its volume, as this is the protocol followed by the ComicVine website, and is hence the meta-data that the ComicVine Scraper puts in the Volume field.

This is the basic structure for a decent organization of comic folders. If you are satisfied with this, you need not concern yourself with the complexities & convolutions we shall ponder on next.

There are comic books, and there are comic books belonging to the publishing houses of DC or Marvel. A series as simple as *Incorruptible* can be easily organized in a folder path like: *E:\Comics\Boom! Studios\Incorruptible (2009)*.

Now consider this from Marvel:

Avengers - The Enemy Within (2013)	Avengers - The Ultron Imperative (2...	Avengers - Ultron Quest (2012)
Avengers - Ultron Unleashed (1999)	Avengers - Ultron Unlimited (2001)	Avengers (2010)
Avengers (2013)	Avengers A.I. (2013)	Avengers Academy (2010)
Avengers Academy Giant-Size (2011)	Avengers Arena (2013)	Avengers Assemble (2012)
Avengers Origins - Luke Cage (2012)	Dark Avengers (2012)	New Avengers (2010)
New Avengers (2013)	Secret Avengers (2010)	Secret Avengers (2013)
The Avengers (2010)	The New Avengers (2005)	The New Avengers (2010)
Uncanny Avengers (2012)	Young Avengers (2013)	

No, DC & Marvel are not the ONLY special ones!

Did you see the Witchblade folder above? See how we have organized all the limited series in one parent folder? There are a lot of series in various publishers that span more than one regular series, and a number of limited series. Notable examples are Hellboy, Star Wars, Doctor Who, G.I. Joe, The Darkness and many more. We can give them the same 'special' treatment that DC & Marvel folders are going to receive.

This mess certainly looks better when placed inside an *Avengers* folder. And even better when we separate these regular (or main) series from the various limited series, by placing them all in yet another folder inside our *Avengers* folder, called something like *Main Series*. So, a desired folder path becomes: *E:\Comics\Marvel\Avengers\Main Series\Uncanny Avengers (2012)*. If you like the prospects, read on...

Series group is the superior field

The two metadata fields that we use a lot to get our comics inside their folders are *Series group* & *Main Character*. One Series Group can always house a number of main characters. For example, the *Metropolis* series group contains the main characters of *Superman*, *Superboy*, *Supergirl* & *Power Girl*

Inside a Main Character folder

Inside a folder such as *Superman*, you can either put all books in the *Series (Volume)* structure, or you can further organize them using the *Format* metadata field.

Using the Format metadata field

We mainly use 5 format fields in this context: Main Series, Limited Series, Annual, One-Shot, & Trade Paper Back.

Crossovers are also a format

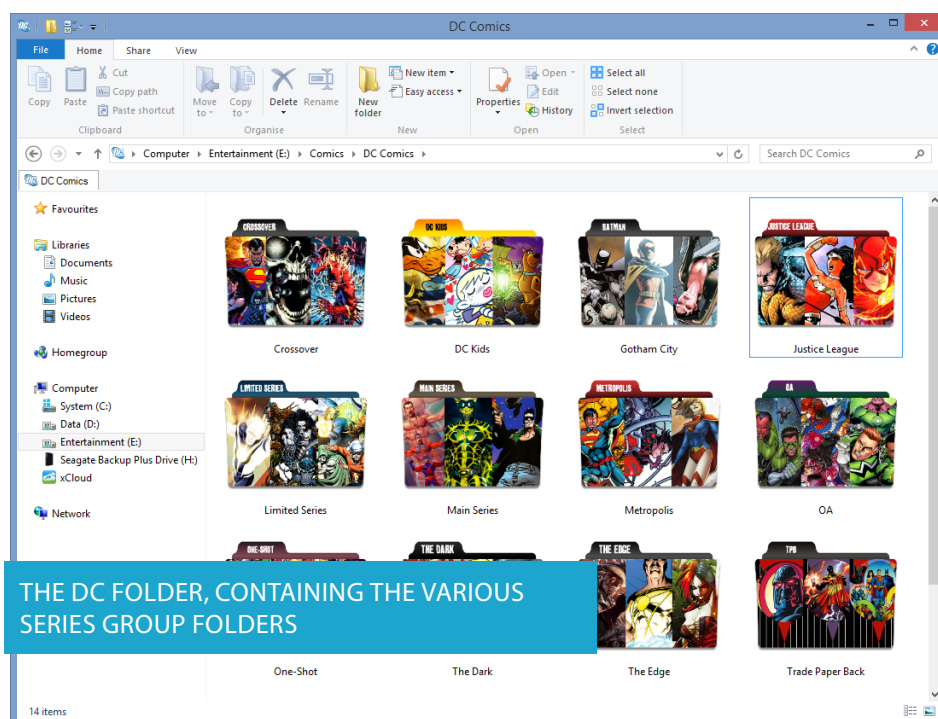
With new crossovers/events getting published regularly, you have to constantly keep on the lookout to accept a particular series name as being a 'crossover'.

No sub-folders inside minor formats

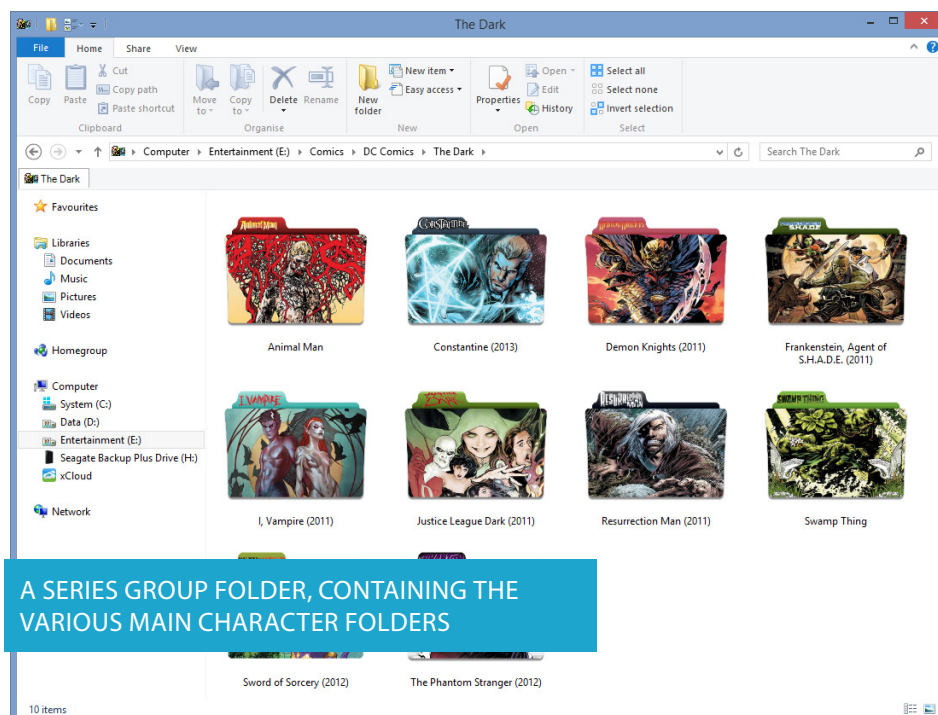
Minor formats like One-Shot, Annual & Trade Paper back should not contain further folders. Since such files are largely standalones, they should be placed inside their Format folders without further parent folders.

DC/Marvel

Managing the comics of DC or Marvel needs categorization at 3 levels, the *Series Group* (e.g. *The Dark*), the *Main Character* (e.g. *Swamp Thing*), and the *Format* (e.g. *Annual*). Below we see a typical DC comics folder, containing well-organized series groups. Each Series group folder further contains folders based on Main Characters.


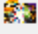
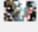
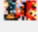

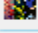
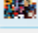
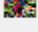

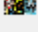
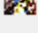

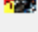



Some *Main Character* folders are special, in that these characters have got a lot of books in their name, and thus need to be further organized. So, characters like *Constantine* (with just one series to date) gets all its comics in a folder titled *Constantine (2012)*, while a character like *Swamp Thing* gets its own folder, with sub-folders based on Format.



Well-organized comics require a clear understanding of folder levels, wherein each sub-folder is representative of a particular metadata field at that level. Here are the folder levels we desire to organize our comics in.

Folder Levels






DC Comics	
	Crossover ▶
	DC Kids ▶
	Gotham City ▶
	Justice League ▶
	Limited Series ▶
	Main Series ▶
	Metropolis ▶
	OA ▶
	One-Shot ▶
	The Dark ▶
	The Edge ▶
	Trade Paper Back ▶
	Watchmen ▶
	Young Justice ▶

Level #2

The second level in the DC/Marvel folders is constituted by the *Main Character* field.

A number of Main Characters can belong to a series group, like:

- Captain America, Iron Man, Hulk (& many more) belong to the Avengers series group
- Cyclops, Hope, Wolverine (& many more) belong to the X-Men series group

	Annual ▶
	Limited Series ▶
	Main Series ▶
	One-Shot ▶
	Trade Paper Back ▶

Level #1

The first level in the DC/Marvel folders is constituted by the *Series group* field.

A series group consists of a number of series fulfilling a single criterion.

This may be:

- a location like Metropolis, Gotham City
- a team like Avengers, X-Men
- a particular universe like Star Wars, Hellboy
- a series that contains a number of mini-series, like Watchmen, Locke & Key

The Dark	
	Animal Man ▶
	Constantine (2013) ▶
	Demon Knights (2011) ▶
	Dial H (2012) ▶
	Frankenstein (2011) ▶
	I, Vampire (2011) ▶
	Justice League Dark (2011) ▶
	Resurrection Man (2011) ▶
	Swamp Thing ▶
	Sword of Sorcery (2012) ▶
	The Phantom Stranger (2012) ▶
	Trinity of Sin - Pandora (2013) ▶
	Zatanna (2010) ▶

Level #3

The third level in the DC/Marvel folders is constituted by the *Format*.

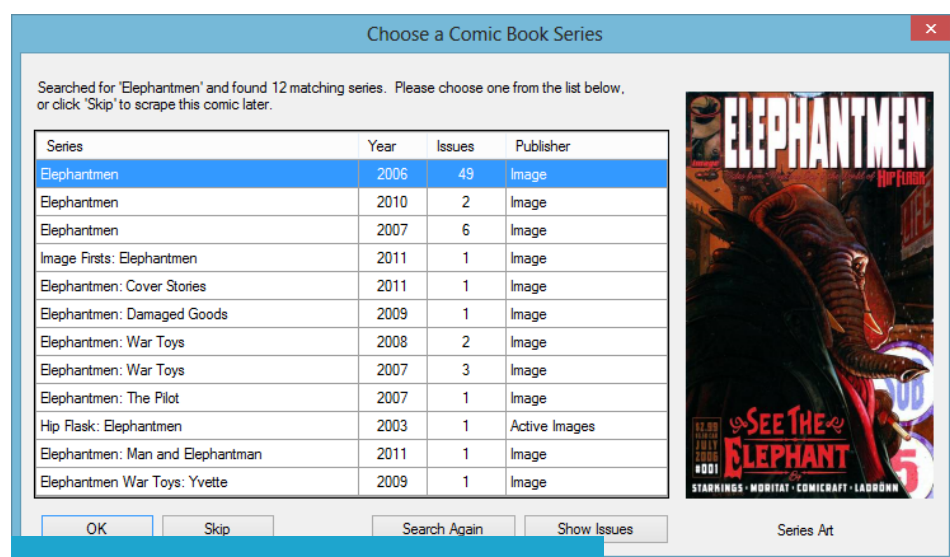
The Formats at this level can be:

- Main Series
- Limited Series
- Annual
- One-Shot
- Trade Paper Back

Please note that while Crossover & Graphic Novel are formats, they do not belong to this level. Rather, these two are level 1 formats (standing beside Series group).

ComicVine Scraper

The first step in our organizational process is running the ComicVine Scraper on the 'raw' comics (unorganized comics with no metadata except for proposed values). Make a smart list that picks up all the newly added books in the library. These are the books that have largely empty metadata fields, save for those that Comicrack automatically picks up from the filename. Now run the ComicVine Scraper script on all these comics. The metadata fields will automatically get filled via the comic vine website.



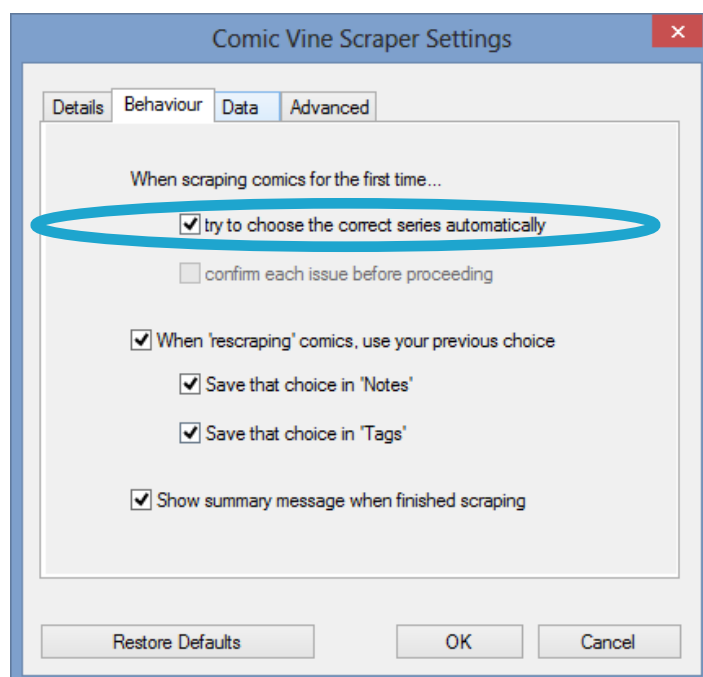
THE SCRAPER FINDS A NUMBER OF MATCHES FOR THE SERIES BEING SCRAPED.

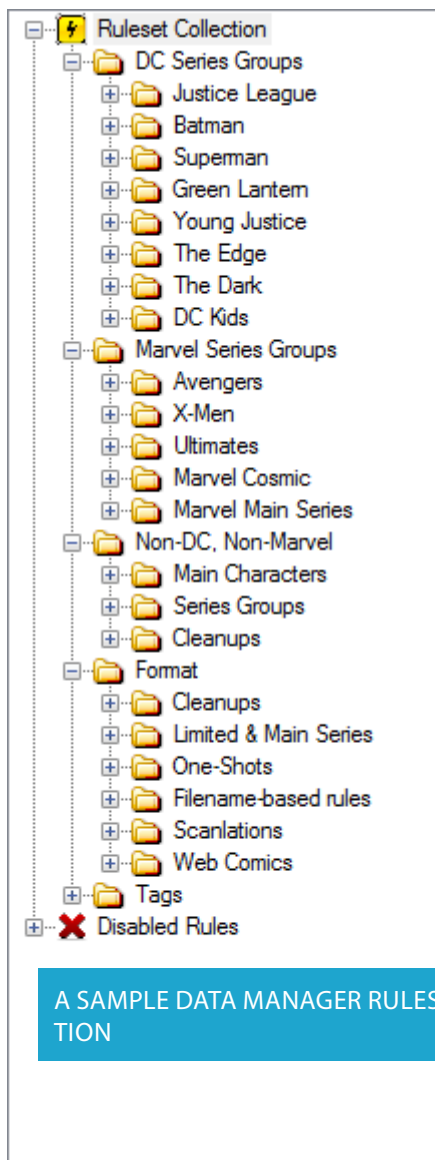
The importance of metadata in organizing and managing comic books has been already emphasized. Manually filling the metadata fields for comic books and fileless entries can be a very slow and inefficient process. Neither would it be easily possible to be accurate and complete.

The Comic Vine scraper automatically scrapes (reads, retrieves, and saves) comic book information from the Comic Vine online database, and automatically fills all the metadata fields in the Info dialog.

If you don't want to review every single comic before scraping it, you should make sure the *try to choose the correct series automatically* option is turned on

Comic Vine Scraper adds a marker called a **CVDB Tag** into the **Tags and Notes** section of each of your scraped comics. There is also a special tag called **CVDBSKIP**, which causes the scraper to ignore comics. When you are scraping your comics, hold down the **Control** key and click the **Skip** button when a comic comes up for which the scraper is unable to find the metadata. This tag will later be used for making a smart list that pulls out such comics for which (unfortunately) manual inputting of metadata would be needed.





A SAMPLE DATA MANAGER RULESET COLLECTION

Data Manager

Once the ComicVine scraper has been run on your unsorted comics, the next step is to run the Data Manager. It lets you enter metadata based on rules. For example, you might want to set the series group to Gotham for all Batman books. This script will complete all these tasks automatically.

Before you run the Data Manager for the first time you have to define your rules. A rule set consists of two parts. Part one defines the rules or criteria the Data Manager uses to decide which books shall be treated. Part two defines the actions which Data Manager should take based on your rules.

A ruleset is basically a directive that tells the Data Manager what it shall do. For example:

If **Format** is _____, AND
If **Count** is greater than 1, AND
If **Publisher** Is Marvel

Then Set **Format** to **Limited Series**

The initial (one-time) process of making rules will take some time, but in the long run, you will hugely benefit from the automatic filling of metadata every time you run the Data Manager on your new, unsorted comic books.

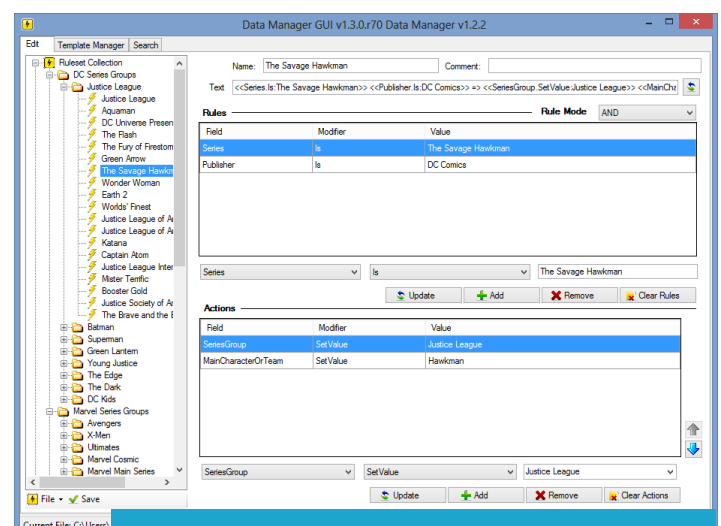
Making intelligent Rulesets

The rules should automatically input our desired series groups & main characters into DC & Marvel books (and a few special Indie books). A simple rule requires the names of the publisher & the series as the criteria, and the desired series group & main character as the action.

For example:

If **Series** Is *The Savage Hawkman*, AND
If **Publisher** Is *DC Comics*

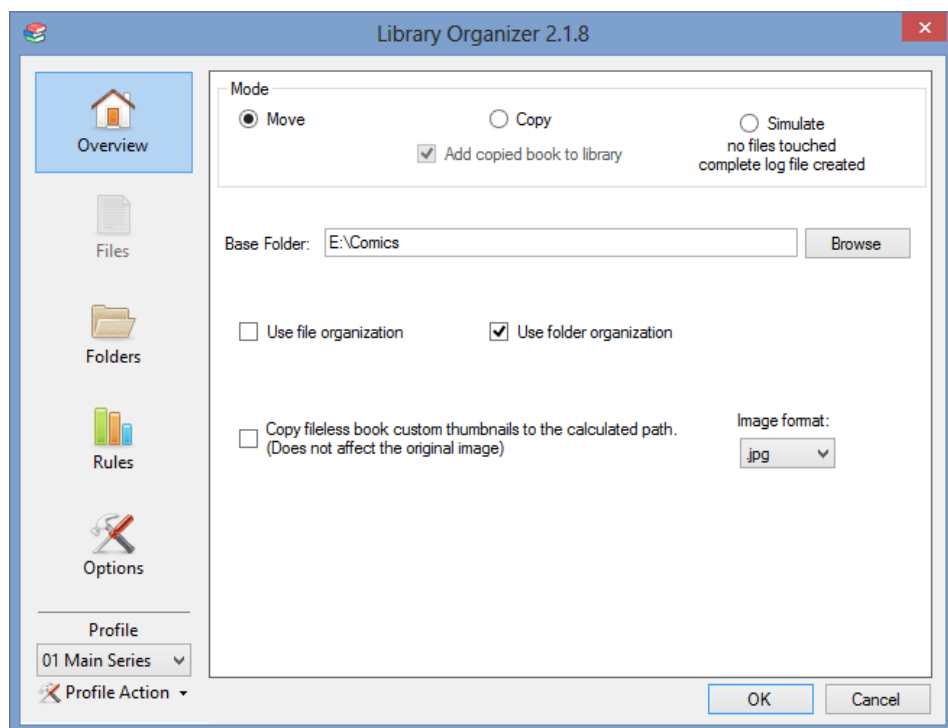
Series Group Set Value *Justice League*
MainCharacterOrTeam Set Value *Hawkman*



A SAMPLE RULE FOR DC/MARVEL BOOKS

Library Organizer

Now that we have added all the meta-data (via ComicVine Scraper & Data Manager), our unsorted books are now 'intelligent' enough to recognize the commands of the Library Manager.



USE THE *MOVE* MODE. SET YOUR BASE FOLDER. USE ONLY FOLDER ORGANIZATION.

The Library Organizer script allows for a highly customized user-specified organization (rename/copy/move) of the selected books and/or the windows explorer folders. The Library Organizer provides options for organizing your comic book files into folders, as well as renaming your files.

You must first manually set the Base Folder which would serve as the destination for the files being copied/moved. The next two tabs of the configuration dialog provide options for folder organization and file naming. These tabs contain a number of metadata buttons that you will recognize from that in the Info dialog. Using these metadata buttons, you can design your directory/file structure. Making rules is an optional step. The Rules tab has the Folder Rules & the metadata rules.

File Organization... Do you really need it?

Unless your files are named Comic 01, Comic 02, you do not really need file renaming. In this handbook, we talk only about folder structures. We do not violate the sanctity of the filenames, and keep them just as the scanners have uploaded them. Keep your sources good, and file renaming won't be needed.

Making profiles is a must.

You may need different structures for different categories of books. Once you have defined the file/folder structure, you can save it as a profile for quick use next time. You can save as many profiles as you need. Later on, we will use the sequential profile dialog to run all profiles one after the other.

Save your unsorted comics folder!

From the *Options* tab, select the *remove empty folders* option. Remember to exclude the 0-day/unsorted folder by adding it to the *do not remove the following folders* whitelist.

Basic

Folder Structure: `{<publisher>}\{<series>}\{<volume0>}\{<seriesComplete(Complete)>}`

Preview: E:\Comics\Image\Mighty Skullkickers (2013)

The Basic profile is meant for all the non-DC, non-Marvel comics which follow the folder structure of Publisher\Series (Volume)

Do not ☐ move books that match Any ☐ of the following rules.

Publisher DC

Publisher Marvel

Publisher DC Comics

Publisher Marvel Comics

Series Group Star Wars

We have to make sure that this profile doesn't touch the DC/Marvel books. So, we make rules that tell this profile to not move any book that has *DC* or *Marvel* as its Publisher.

If you have any other series or publisher that you wish to organize as multiple levels, you can exclude that too. Here, for example, we have also excluded the *Star Wars* comics.

Main Character

Folder Structure: `{<publisher>}\{<maincharacter>}\{<format>}\{<series>}\{<volume0>}`

Preview: E:\Comics\Dark Horse Comics\Conan\Main Series\Conan the Barbarian (2012)

The Main Character profile moves all comics for which we require only a *Main character* folder.

Do not ☐ move books that match Any ☐ of the following rules.

Main Character Or Title

Format Crossover

The first rule here is the obvious: Do not move any book where the *Main Character* field is blank.

Then, we may have some books where the *Main Character* field is filled in, but these are books belonging to a crossover, for which we would like to have a separate folder. So, we exclude these books by telling the profile to not move books that have the *Format* as *Crossover*.

It is worth noting here that if we have a main character for our DC/Marvel books, we also have its series group.

Series Group

Folder Structure: `{<publisher>}\{<seriesgroup>}\{<maincharacter>}\{<format>}\{<series>}\{<volume0>}}`

Preview: E:\Comics\DC Comics\Metropolis\Superman\Main Series\Action Comics (2011)

The Series Group profile moves all DC/Marvel comics for which we require a *Series Group* folder (and a *Main Character* folder).

Do not ☐ move books that match ☐ Any ☐ of the following rules.

Series Group ☐ is ☐

Format ☐ is ☐ Crossover ☐

The first rule here is the obvious: Do not move any book where the *Series group* field is blank.

Then, we may have some books where the *Series Group* field is filled in, but these are books belonging to a crossover, for which we would like to have a separate folder. So, we exclude these books by telling the profile to not move books that have the *Format* as *Crossover*.

Crossover

Folder Structure: `{<publisher>}\{<format>}\{<altSeries>}\{<series>}\{<volume0>}}`

Preview: E:\Comics\Marvel\Crossover\Age of Ultron\Age of Ultron (2013)

The Crossover profile moves all DC/Marvel comics for which we require a *Crossover* folder based on the *Alternate Series* field.

Only ☐ move books that match ☐ All ☐ of the following rules.

Format ☐ is ☐ Crossover ☐

A crossover can have as many as 4 different types of books: the preludes, the Core mini-series (e.g. Age of Ultron #1-10), the tie-ins (e.g. Fantastic Four #5AU), and sister mini-series (e.g. Ultron). A crossover folder should contain the core mini-series & the sister mini-series (if any). The tie-ins should stay in the folders which house their ongoing series (e.g. Avengers Assemble #14AU stays in its E:\Comics\Marvel\Avengers\Avengers\MainSeries\Avengers Assemble folder).

We just need one rule: the *Format* is *Crossover*.

Graphic Novel

Folder Structure: `{<publisher>}\{<format>}\`

Preview: E:\Comics\Top Shelf\Graphic Novel

The Graphic Novel profile moves all comics for which we have specified the format as either *graphic novel* or *trade paperback*.

Only move books that match All of the following rules.

Format is Graphic Novel

Match Any of the following rules

Main Character Or Title is

Series Group is

We have one main rule: the **Format** is **Graphic Novel**.

For books which have the **Main Character** or the **Series group** field(s) filled in, we place their graphic novels inside their own sub-folders (e.g. *Batman: Earth one* is a graphic novel that should stay in its E:\Comics\DC Comics\Gotham City\Batman\Graphic Novel folder). So, we make sure that this profile does not move books for which the **Main Character** or the **Series Group** field(s) is/are filled in.

Limited Series

Folder Structure: `{<publisher>}\{<format>}\{<series>}\{<volume0>}`

Preview: E:\Comics\Marvel\Limited Series\Thanos Rising (2013)

The Limited Series profile moves all comics for which we have specified the format as *limited series*.

Only move books that match Any of the following rules.

Format is Limited Series

Match Any of the following rules

Main Character Or Title is

Series Group is

We have one main rule: the **Format** is **Limited Series**.

For books which have the **Main Character** or the **Series group** field(s) filled in, we place their limited series inside their own sub-folders (e.g. *Angel - A Hole in the World* is a limited series that should stay in its E:\Comics\IDWPublishing\Angel\Limited Series folder). So, we make sure that this profile does not move books for which the **Main Character** or the **Series Group** field(s) is/are filled in.

Main Series

Folder Structure: `{<publisher>}\Main Series\{<series>}\{<volume0>}`

Preview: E:\Comics\DC Comics\Main Series\DC Universe Presents (2011)

The Main Series profile moves all DC/Marvel comics for which the format is blank, but still we would have them placed inside a *Main Series* folder.

This profile is useful in organizing 'orphan' series (like Marvel's *Fearless Defenders*, or DC's *Hitman*) which defy categorization by a Main Character or Series Group. So, we make sure that this profile does not move books for which the *Main Character* or the *Series Group* field(s) is/are filled in. Also, the profile should only touch books which belong to either DC or Marvel.

Instead of using Main Series as a Format, we instead use the *Main Series* word as such in the Folder structure.

Annals

Folder Structure: `{<publisher>}\{<series>}\{<volume0>}\{<format>}`

Preview: E:\Comics\Boom! Studios\Planet of the Apes (2012)\Annual

The Annals profile moves all comics for which the format is *Annual*, irrespective of whether the *Main character* or the *Series Group* fields are filled or not.

When the Library Organizer runs this profile on the selected books, it marks all books fulfilling the rule (Format is Annual) as okay to be moved. This profile does not care whether the *Main Character* or the *Series group* field(s) are filled in or not, as these will be taken care of by the next two profiles.

Annals (SG)

Folder Structure: `{<publisher>}\{<seriesgroup>}\{<format>\}`

Preview: E:\Comics\DC Comics\Gotham City\Annual

The Annals (SG) profile moves all comics for which the format is *Annual*, and the *Series Group* field is filled up, irrespective of the *Main character* field.

Only ☐ move books that match All ☐ of the following rules. Add Group Add Rule

Format ☐ is ☐ Annual -

Series Group ☐ is not ☐ -

When the Library Organizer runs this profile on the selected books, it marks all books fulfilling the rule (**Format** is **Annual**, and **Series group** is not empty) as okay to be moved. This profile does not care whether the **Main Character** field is filled in or not, as this will be taken care of by the next profile.

Annals (MC)

Folder Structure: `{<publisher>}\{<seriesgroup>}\{<maincharacter>}\{<format>\}`

Preview: E:\Comics\DC Comics\Metropolis\Superman\Annual

The Annals (MC) profile moves all comics for which the format is *Annual*, and the *Main Character or Team* field is filled up.

Only ☐ move books that match All ☐ of the following rules. Add Group Add Rule

Format ☐ is ☐ Annual -

Main Character Or T ☐ is not ☐ -

When the Library Organizer runs this profile on the selected books, it marks all books fulfilling the rule (**Format** is **Annual**, and **Main Character** is not empty) as okay to be moved. This profile does not care whether the **Series group** field is filled in or not, as this has already been taken care of by the previous profile.

One-Shot

Folder Structure: `{<publisher>}\{<format>}`

Preview: E:\Comics\DC Comics\One-Shot

The One-Shot profile moves all comics for which the format is *One-Shot*, irrespective of whether the *Main character* or the *Series Group* fields are filled or not.

Only ☐ move books that match Any ☐ of the following rules.

Format ☐ is ☐ One-Shot -

When the Library Organizer runs this profile on the selected books, it marks all books fulfilling the rule (*Format* is *One-Shot*) as okay to be moved. This profile does not care whether the *Main Character* or the *Series group* field(s) are filled in or not, as these will be taken care of by the next two profiles.

One-Shot (SG)

Folder Structure: `{<publisher>}\{<seriesgroup>}\{<format>}\`

Preview: E:\Comics\DC Comics\Gotham City\One-Shot

The One-Shot (SG) profile moves all comics for which the format is *One-Shot*, and the *Series Group* field is filled up, irrespective of the *Main character* field.

Only ☐ move books that match All ☐ of the following rules.

Format ☐ is ☐ Annual -

Series Group ☐ is not ☐ -

When the Library Organizer runs this profile on the selected books, it marks all books fulfilling the rule (*Format* is *One-Shot*, and *Series group* is not empty) as okay to be moved. This profile does not care whether the *Main Character* field is filled in or not, as this will be taken care of by the next profile.

One-Shot (MC)

Folder Structure: {<publisher>}\{<seriesgroup>}\{<maincharacter>}\{<format>}

Preview: E:\Comics\DC Comics\Metropolis\Superman\One-Shot

The One-Shot (MC) profile moves all comics for which the format is *One-Shot*, and the *Main Character or Team* field is filled up.

Only move books that match All of the following rules.

Format is One-Shot

Main Character Or Team is not

When the Library Organizer runs this profile on the selected books, it marks all books fulfilling the rule (*Format* is *One-Shot*, and *Main Character* is not empty) as okay to be moved. This profile does not care whether the *Series group* field is filled in or not, as this has already been taken care of by the previous profile.

TPB

Folder Structure: {<publisher>}\{<format>}

Preview: E:\Comics\DC Comics\Trade Paper Back

The TPB profile moves all comics for which the format is *Trade Paper Back*, irrespective of whether the *Main character* or the *Series Group* fields are filled or not.

Only move books that match Any of the following rules.

Format is Trade Paper Back

When the Library Organizer runs this profile on the selected books, it marks all books fulfilling the rule (*Format* is *Trade Paper Back*) as okay to be moved. This profile does not care whether the *Main Character* or the *Series group* field(s) are filled in or not, as these will be taken care of by the next two profiles.

TPB (SG)

Folder Structure: `{<publisher>}\{<seriesgroup>}\{<format>}`

Preview: E:\Comics\DC Comics\Metropolis\Trade Paper Back

The TPB (SG) profile moves all comics for which the format is *Trade Paper Back*, and the *Series Group* field is filled up, irrespective of the *Main character* field.

Only ☐ move books that match All ☐ of the following rules.

Format ☐ is ☐ Trade Paper Back -

Series Group ☐ is not ☐ -

When the Library Organizer runs this profile on the selected books, it marks all books fulfilling the rule (**Format** is **Trade Paper Back**, and **Series group** is not empty) as okay to be moved. This profile does not care whether the **Main Character** field is filled in or not, as this will be taken care of by the next profile.

TPB (MC)

Folder Structure: `{<publisher>}\{<seriesgroup>}\{<maincharacter>}\{<format>}`

Preview: E:\Comics\DC Comics\Metropolis\Superman\Trade Paper Back

The TPB (MC) profile moves all comics for which the format is *Trade Paper Back*, and the *Main Character* or *Team* field is filled up.

Only ☐ move books that match All ☐ of the following rules.

Format ☐ is ☐ Trade Paper Back -

Main Character Or Team ☐ is not ☐ -

When the Library Organizer runs this profile on the selected books, it marks all books fulfilling the rule (**Format** is **Trade Paper Back**, and **Main Character** is not empty) as okay to be moved. This profile does not care whether the **Series group** field is filled in or not, as this has already been taken care of by the previous profile.

01 Main Series	▼	
02 Limited Series	▼	-
03 Graphic Novel	▼	-
04 Crossover	▼	-
05 Main Character	▼	-
06 Series Group	▼	-
07.1 Annuals	▼	-
07.2 Annuals (SG)	▼	-
07.3 Annuals (MC)	▼	-
08.1 One-Shot	▼	-
08.2 One-Shot (SG)	▼	-
08.3 One-Shot (MC)	▼	-
09.1 TPB	▼	-
09.2 TPB (SG)	▼	-
09.3 TPB (MC)	▼	-
10 Basic	▼	-

MAKE SURE TO ADD THE PROFILES IN THIS ORDER ONLY.

Running the profiles

Now that all your profiles are ready, and the comicvine scraper & data manager have already added the metadata, the last step is to run sequential profiles on your unsorted comics in one go!

Make a 0-day/unsorted smart list that pulls out comics from your 0-day/unsorted folder.

Select all the books in the 0-day smart list and run the library organizer. The *select profiles* dialog will pop-up. Here you need to place the profiles in a particular sequential order as shown in the screenshot on the left. Use the Add button to add the profiles one after the other.

Once the profiles are there, just click OK & the library organizer will run them one after the other, moving the books to their desired locations.

Basic concepts of profile orders

Library Organizer looks at the profiles in the order they are listed.

Library Organizer will first check the book against the first profile. If the rules in the profile says the book can be moved, it marks the book to be moved using this profile. Then it checks the next profile against the book. If the rules in this profile also say the book can be moved, it changes the book to be moved with this profile.

So, Library Organizer will always use the last possible profile to move the book.

ESE DELESSI

The Final Workflow

01: Convert to CBZ

Name "CBR Finder"
Match [File Format] contains "rar"

As you already know the importance of having CBZ files for storing the metadata information (as comicinfo.xml file), you should first preferably convert all the CBR files to CBZ files. Make a smart list that pull all the books which are CBR archives, and convert them to CBZ using the Export books function from the browser right-click context menu.

02: ComicVine Scraper



Make a smart list that picks up all the newly added books in the library. These are the books that have largely empty metadata fields, save for those that Comicrack automatically picks up from the filename. Now run the ComicVine Scraper script on all these comics. The metadata fields will automatically get filled via the comic vine website.

03: Add Scanner Info



While the scraper fills in most of the fields, it cannot find the scanner's name (for obvious reasons). You need the Scan info from filename script for that. Make a smart list to pull all the books which need to have the scanning information filled up. Now, just run the Scan info from filename script on the books pulled by your newly made smart list.

04: CVDBSKIP

Name "CVDBSKIP"
Match [Tags] contains "CVDBSKIP"

The comic vine scraper may miss some books due to lack of data in the comicvine website. Add a CVDBSKIP tag to these books by holding the CTRL key when pressing the skip button on the scraper. Make a smart list that pulls all the CVDB skip books. Fill in the metadata fields for these books manually.

05: Proposed Values



The Proposed Values are metadata auto-discovery that ComicRack does by processing the filename. Such fields stay in grey till the user confirms (or 'commits') them. Either commit them permanently (from the browser context menu Automation -> Commit proposed values) or hide them (if the guess is wrong) and manually over-write them.

06: Duplicates Manager



This script chooses which of the duplicated comics to keep (and which to delete) based on the rules you specify. First setup the rules for the duplicates manager script. From the Views menu on the browser toolbar, choose the Show duplicates option. Now select all the books in the browser and just click the duplicates manager button.

07: Data Manager



The Data Manager script fills in the metadata based on the rules specified by the user. Settings up the rules for the first time would require some time & effort, but, in the long run, this saves you a lot of work. After the books have been scraped, and the proposed values committed, just select them click the Data manager icon from the browser toolbar.

08: Library Organizer



The Library Organizer script uses user-specified organization (rename/copy/move) of the selected books and/or the windows explorer folders. First select the books on which you wish to run the Library Organizer. Now, click on the Library Organizer icon in the browser toolbar, or Right-click -> Automation -> Library Organizer

ComicRack Steps

Optional Scripts

Essential Scripts

▼ The Organizer	65	82	170
0-Day Comics	44	44	
01 Convert to CBZ	63	52	132
02 ComicVine Scraper	17	21	39
03 Add Scanner Info	63	53	133
04 CVBDSKIP	7	9	
05 Proposed Values	17	6	25
06 Duplicates Manager	2	2	
07 DataManager	5	3	8
08 Library Organizer	5	5	

Smart Lists

To achieve our desired workflow in ComicRack, we need to make some smart lists that would pull relevant books from our unsorted folder, so that we can run the scripts on them. The order of the smart lists, the grouping/stacking criteria as well as the metadata fields displayed in the browser window are all important to achieve maximum accuracy & efficiency while using them.

The Resources folder (from the zip archive of this PDF) contains 9 smart lists, which correspond to the final workflow outlined on the previous page. Import these lists into your ComicRack library.

Do not forget to edit the lists to change the path of unsorted comic folder directory to your own. Also, every list must have a certain layout for best results. Have a look below to understand why:

P...	Cover	Series	Number	Custom: comicvine_issue	Custom: DataManager.processed	Series Group	Main Character/Team	Alternate Series	Format
▼ Last Year (7)									
1		The Li'l Depressed Boy	10	333586					
2		Deadpool	48	308571			Deadpool		Main Series
3		Detective Comics	5	309361		Gotham City	Batman		Main Series
4		Fear Itself: The Fearless	5 (of 12)	307637				Fear Itself	Crossover
5		The Kents	1	302490					Graphic Novel
6		Thunderbolts	170	315930				The Great Esca...	Main Series
7		Carnage U.S.A.	5 (of 5)	329224				Carnage U.S.A.	Limited Series

This is the layout of the smart list on which we plan to run the Duplicates Manager. This is in the *Details* view, as we need at-a-glance look at many metadata fields. We need to have the *Custom: comicvine_issue* column to make sure that the ComicVine Scraper has already been run. The, we have the *Custom: DataManager.processed* column to make sure that the Data Manager is yet to be run. This are followed by columns for Series Group, Main Character & Format, so that once the Data Manager has been run, we can immediately see if the correct values have been put up.

Smart List	Group/Stack/Arrange	Columns in Details View
0 0-day Comics	Released ▾ Series ▾ Series ▾	<Thumbnail view>
1 Convert to CBZ	None ▾ File Format ▾ Series ▾	<Thumbnail view>
2 ComicVine Scraper	None ▾ Series ▾	Series - Number - Title - Publisher - Volume - Year - Writer
3 Add Scanner Info	Added ▾ Scan Information ▾	File Name - Scan Information
4 CVBDSKIP	Series ▾ Number ▾	Series - Number - Title - Publisher - Volume - Year - Writer
5 Proposed Values	None ▾ Series ▾	Series - Number - Title - Publisher - Volume - Year - Writer
6 Duplicates Manager	Series ▾ File Size ▾	Number - File Name - Pages - File Size - Scan Information
7 Data Manager	Added ▾ Series ▾	Series - Number - Custom fields - Series Group - Main Character - Format
8 Library Organizer	Added ▾ Publisher ▾	File Path - Publisher - Series Group - Main Character - Format

Once you have imported the smart lists, use this table to set the list layout (group, stack & arrange). The columns in the details view are also important.

IMPORTANT!

The files from the resources folder have embedded paths pointing to the path "E:\0 Day". You should edit the smart lists to point to your own 'unsorted' folder where you will be pulling your unsorted comics from. Similarly, in the Library Organizer profiles, you should change the base folder to point to your own comics folder.

Step-by-step

The Resources folder (from the zip archive of this PDF) contains folders containing all the Smart Lists we discussed in our workflow, as well as all the data manager rules and library organizer profiles we made earlier. The scripts are not included in the resources folder, and you are encouraged to get the latest updates from the download links provided on the first & the last pages.

Using these resources, here is a step-by-step tutorial to organize your comic books:

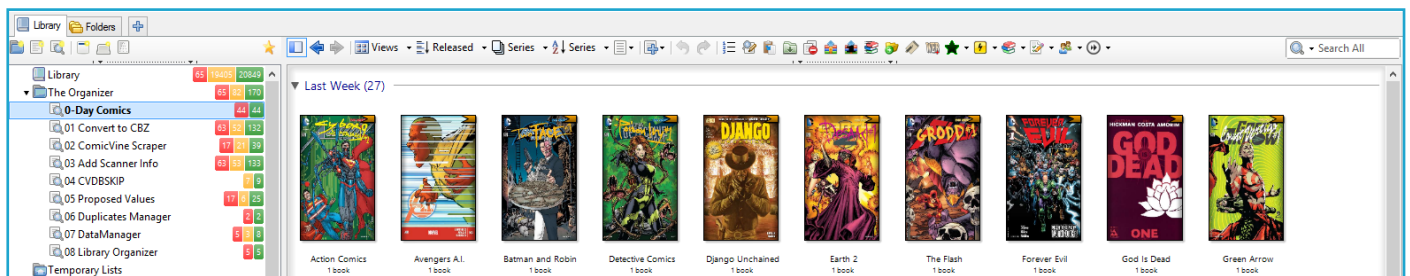
-1

IN COMICRACK, PREPARE THE RESOURCES AS DETAILED BELOW. BE SURE TO RESTART COMICRACK AFTER DOING THE IMPORTS.

- i. Install the ComicVine Scraper, Data Manager and the Library Organizer scripts.
- ii. Import the smart lists (.CBL files) from the resources folder into the ComicRack library by double-clicking them or dragging and dropping them onto the library. Once imported, move the list items into the appropriate structure as shown on page 18. Edit the list layouts & change the file paths to point to your unsorted folder.
- iii. Import the profiles (.LOB files) for Library Organizer from the resources folder. Import these by starting the Library Organizer and clicking the 'Profile Action' item on the bottom left, selecting 'Import' and pointing to the 'LibraryOrganizerProfiles' file where you extracted your Tutorial Download. This file imports all of the profiles in one step.
- iv. Import the Data Manager rules (.DAT files) from the resources folder into the Data Manager. Import them by opening the Data Manager configuration dialog, and go to **File -> Import** & browse to the resources folder to select the rule file there.

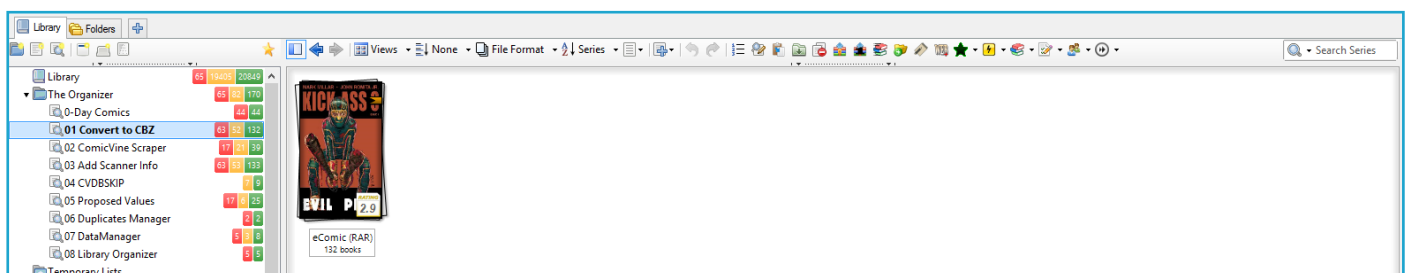
0

ADD YOUR UNSORTED COMICS TO THE LIBRARY. THIS IS THE FIRST BASE STEP TO BEGIN WORKING WITH THE FILES. THIS ADDS THE FILES TO THE LIBRARY AND THEY SHOULD APPEAR IN THE **0-DAY COMICS** SMART LIST.



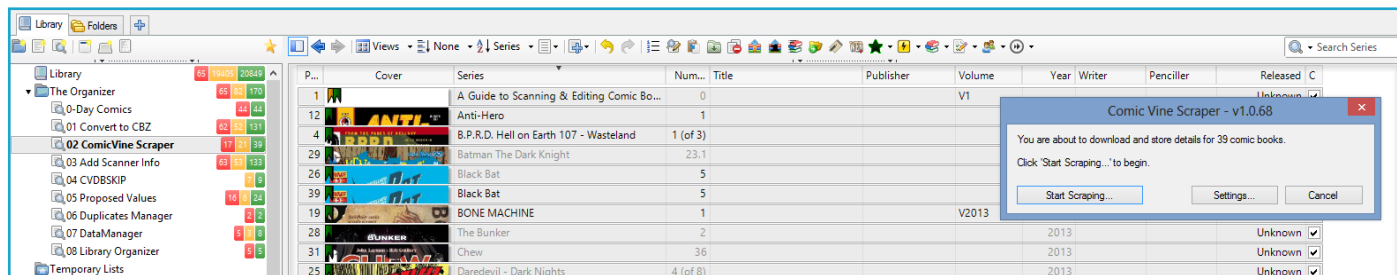
1

SELECT THE **CONVERT TO CBZ** SMART LIST. RIGHT-CLICK ON THE STACKED RAR COMICS AND FROM THE **EXPORT BOOKS** MENU, CONVERT TO CBZ.

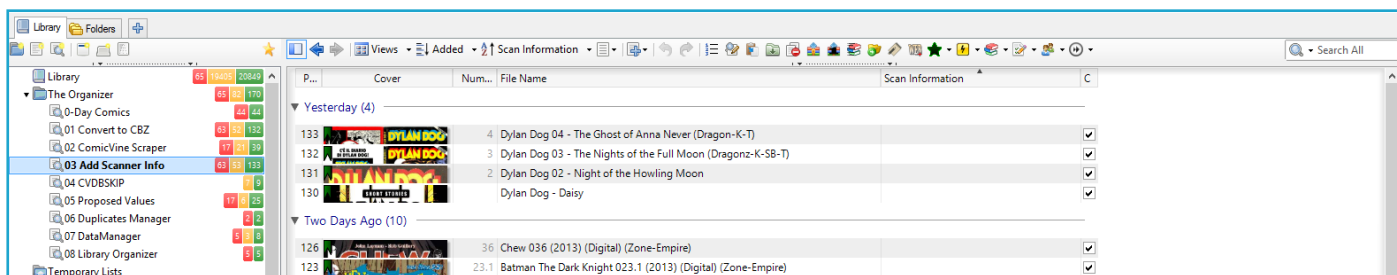


SELECT THE **COMICVINE SCRAPER** SMART LIST AND YOU WILL SEE YOUR UNSORTED AND UNSCRAPED COMICS.

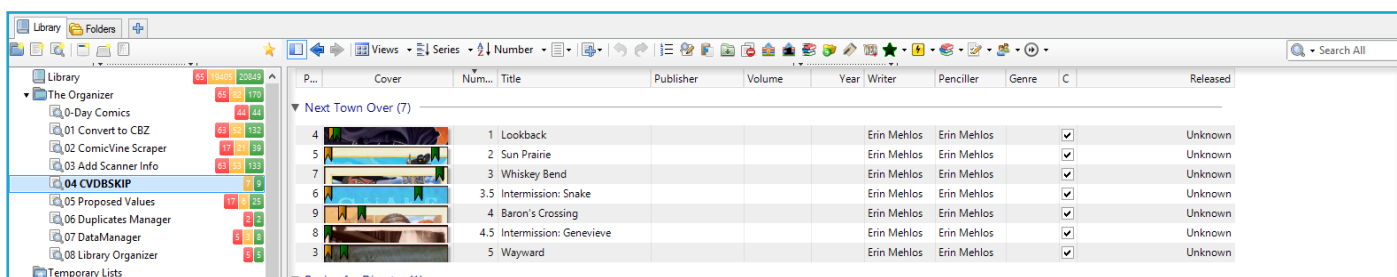
- Select all the files in this list, and select the ComicVine Scraper (from the Automation menu or the browser toolbar).
- If you don't want to review every single comic before scraping it, you should make sure the **try to choose the correct series automatically** option is turned on. The metadata fields will automatically get filled via the comic vine website.
- The comic vine scraper may miss some books due to lack of data in the comicvine website. Add a CVDBSKIP tag to these books by holding the CTRL key when pressing the skip button on the scraper.



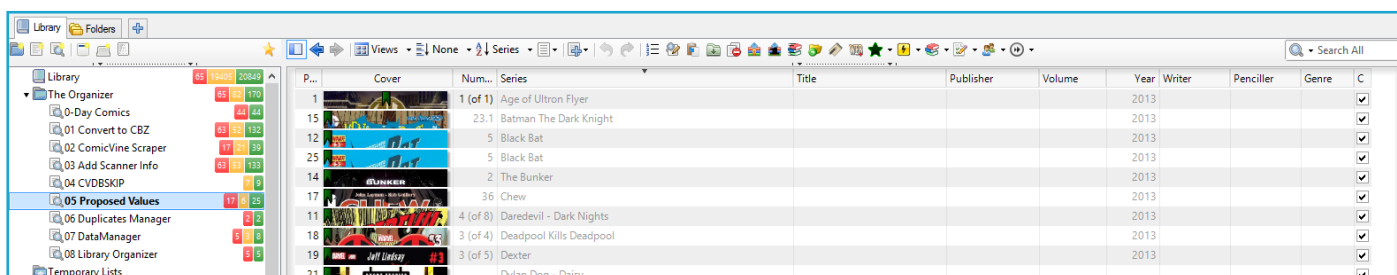
SELECT THE **ADD SCANNER INFO** SMART LIST. YOU WILL SEE THAT THE **SCAN INFORMATION** COLUMN IS EMPTY. SELECT ALL THE BOOKS AND CLICK THE **SCAN INFORMATION FROM FILENAME** BUTTON ON THE BROWSER TOOLBAR.



SELECT THE **CVDBSKIP** SMART LIST AND YOU WILL SEE BOOKS WITH EMPTY METADATA FIELDS. FILL IN THE METADATA FIELDS FOR THESE BOOKS MANUALLY.

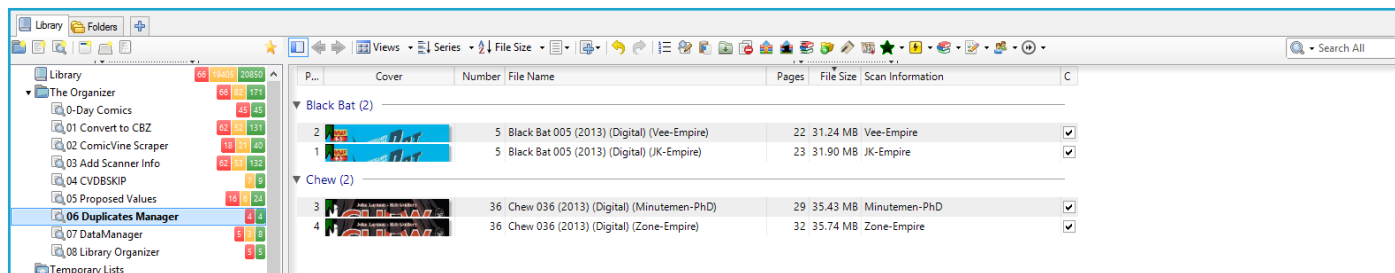


SELECT THE **PROPOSED VALUES** SMART LIST AND YOU WILL SEE BOOKS WITH GREYED OUT METADATA FIELDS. EITHER COMMIT THEM PERMANENTLY OR HIDE THEM AND MANUALLY OVER-WRITE THEM.



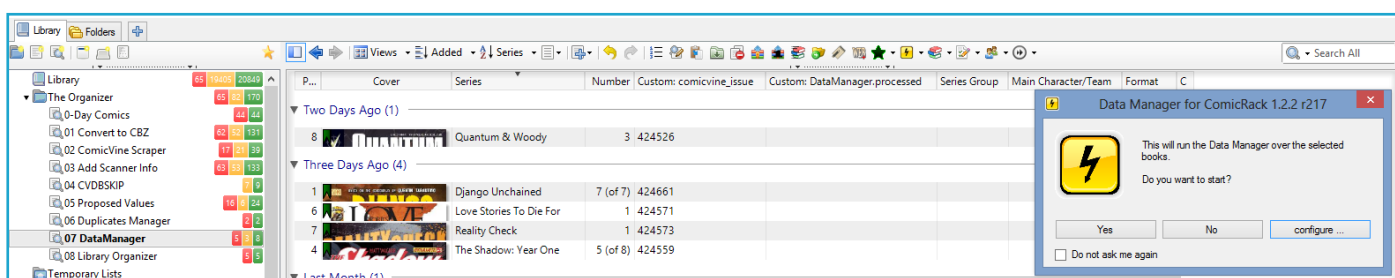
6

SELECT THE **DUPLICATES MANAGER** SMART LIST. SELECT ALL BOOKS & CLICK THE **DUPLICATES MANAGER** BUTTON ON THE **BROWSER TOOLBAR**.



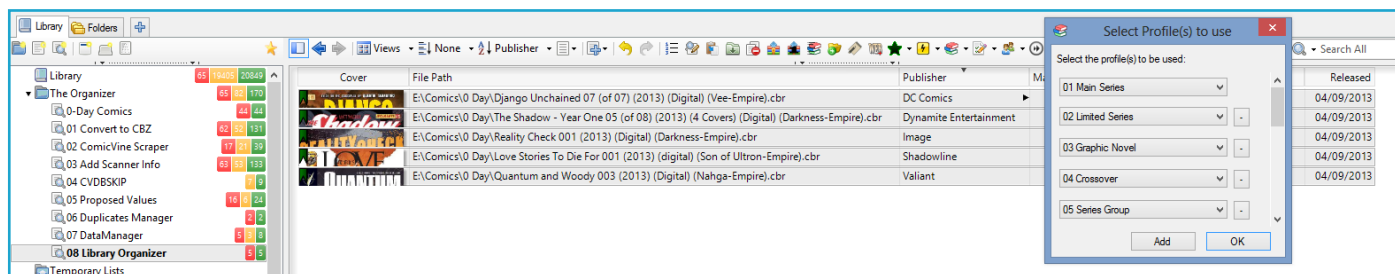
7

SELECT THE **DATA MANAGER** SMART LIST. SELECT ALL BOOKS & CLICK THE **DATA MANAGER** BUTTON ON THE **BROWSER TOOLBAR**.



8

SELECT THE **LIBRARY ORGANIZER** SMART LIST. SELECT ALL BOOKS & CLICK THE **LIBRARY ORGANIZER (QUICK)** BUTTON ON THE **BROWSER TOOLBAR**. THE SELECT PROFILES DIALOG WILL POP UP. JUST CLICK OK.



THE UNDO BUTTON!

If, at any stage during the organizational workflow, you feel that the results are different from what you expected and need changing, just hit the **Undo** button on the **browser toolbar**.

Also note that The **Library Organizer** comes bundled with its own Undo script. Find it in the Main menu's **Automation** sub-menu. But remember, this only works on the last move operation that you performed with the library organizer, and none prior to that.

Download the scripts here:

- [ComicVine scraper](#)
- [Data manager](#)
- [Library Organizer](#)
- [Duplicates Manager](#)
- [Scan Information from Filename](#)
- [Proposed Values](#)